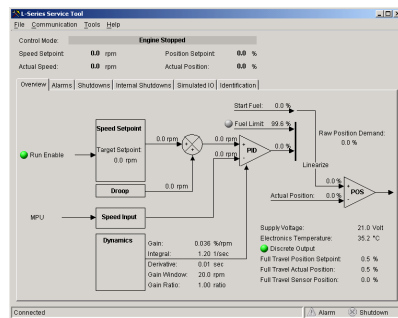


CLASS #106 – L-Series Controls



Description

This class will give the student the opportunity to learn more about servicing and commissioning the L-Series control, a low cost and fully integrated speed control and actuator. During this course, the student will learn about the theory, installation, programming, operation, and maintenance of the L-Series control with the help of simulators and PowerPoint presentations. The hands-on part of the course will include programming, adjustments, and troubleshooting techniques on the control system.

Class Objectives

Upon successful completion of this course the student will be able to:

- Demonstrate an understanding of speed control theory pertaining to the L-Series control system.
- Calibrate, program, and set-up the unit for applications such as Stanadyne® and Delphi® pump arrangements.
- Configure inputs for sensor or auxiliary functionality and control purposes.
- Configure outputs for meter drivers or alarm indication.
- Understand control modes such as dual dynamics, fuel limiting or gain mapping, and when each mode is in effect.

Course Duration

The course runs for two days and is conducted at our premises in Kingsgrove, NSW. We can offer this course as part of an on-site training program (details available on request). Class size is limited to a maximum of eight students.

Attainment

A "Certificate of Attainment" is awarded to students who successfully pass a written examination.

The instructor reserves the right to modify the class content to best suit the needs of the class.